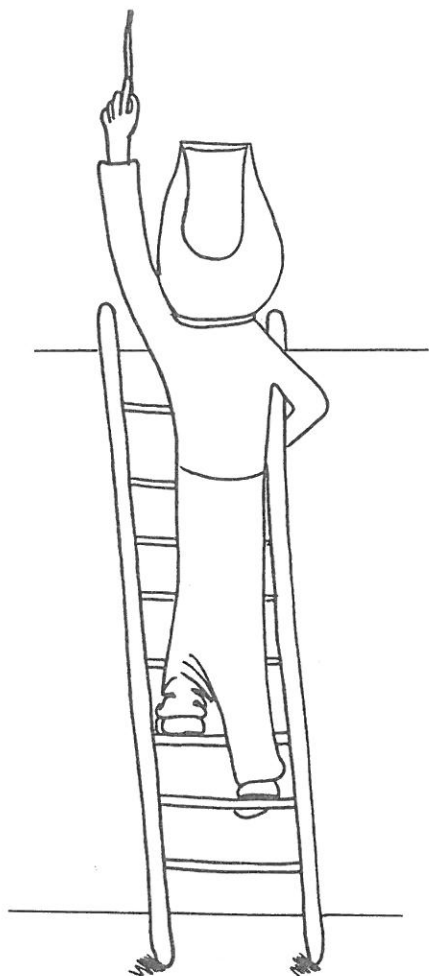
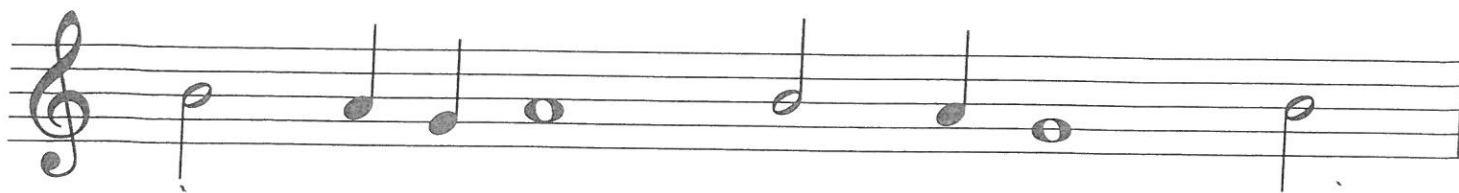
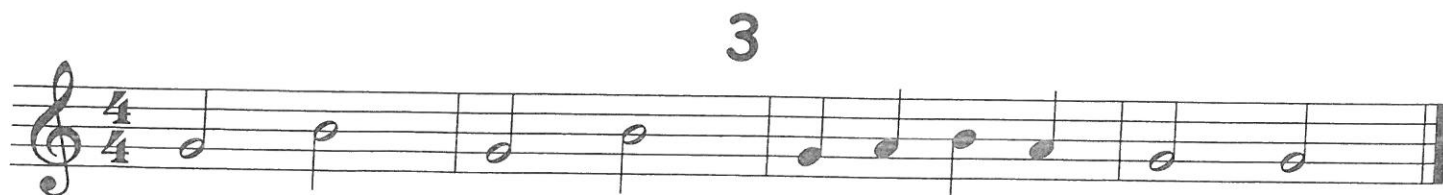
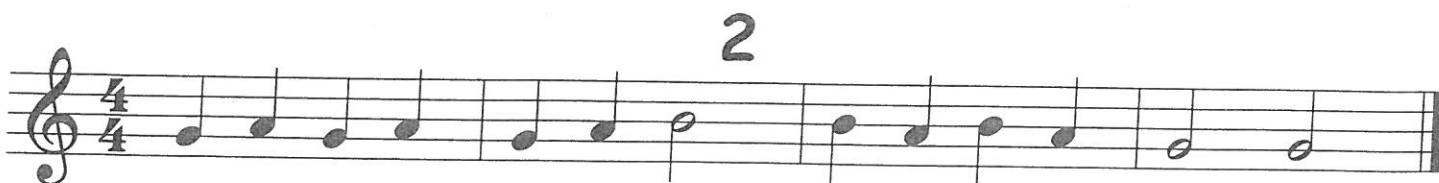
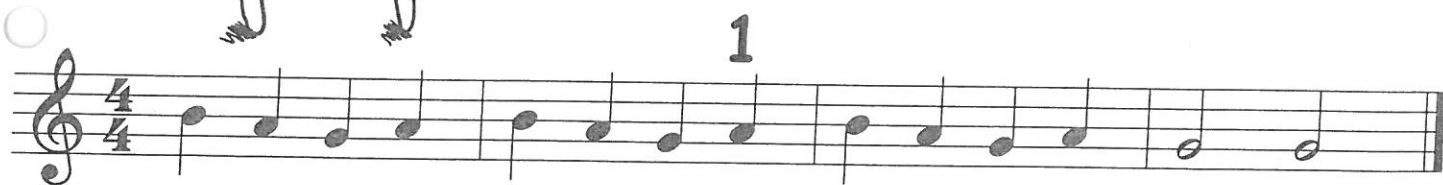


# Opdracht

Schrijf de namen onder de noten



## Oefeningen



Intro

# Ouwe Jan en jonge Jan



Trad.  
Bew. G.M.

Play

Musical notation for the first line of 'Ouwe Jan en jonge Jan'. Chords: G, D7, G. Ends with a 'V' (volta) symbol.

Musical notation for the second line of 'Ouwe Jan en jonge Jan'. Chords: G, D7, G. Ends with a double bar line and repeat dots.

Intro

# Issie Dissie Dou



Trad.  
Bew. G.M.

Play

Musical notation for the first line of 'Issie Dissie Dou'. Chords: G, D7, G, D7. Ends with a 'V' (volta) symbol.

Musical notation for the second line of 'Issie Dissie Dou'. Chords: G, C6, G/D, D7, G. Ends with a double bar line and repeat dots.

Intro

# Liesje heeft een Lammetje



Trad.  
Bew. G.M.

Play

Musical notation for the first line of 'Liesje heeft een Lammetje'. Chords: G, D, G. Ends with a 'V' (volta) symbol.

Musical notation for the second line of 'Liesje heeft een Lammetje'. Chords: G, D, G. Ends with a double bar line and repeat dots.

Intro

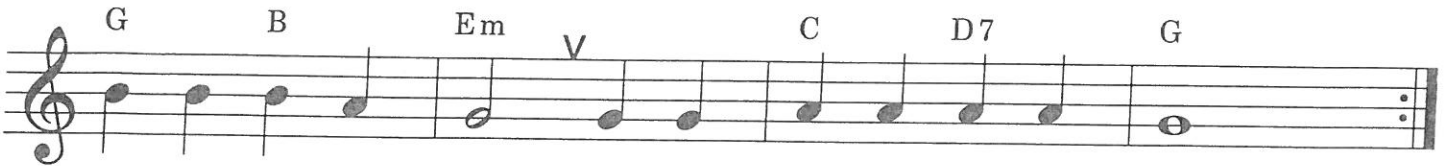
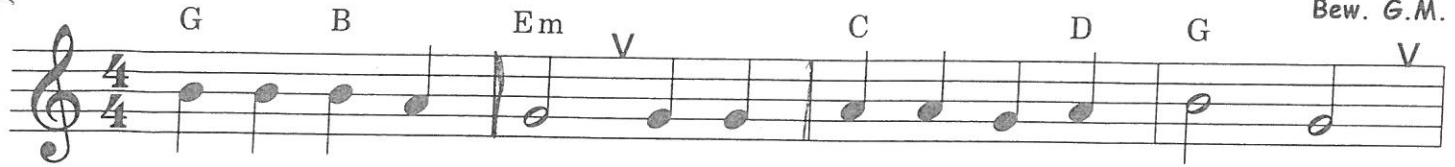


# Mieke hou je vast

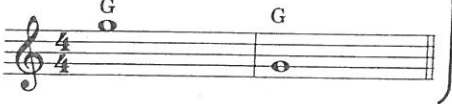


Trad.  
Bew. G.M.

Play



Intro

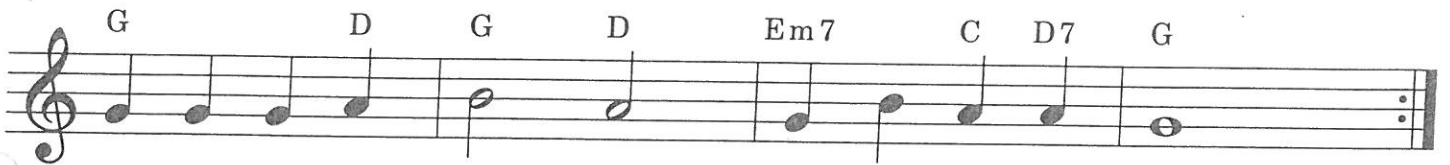
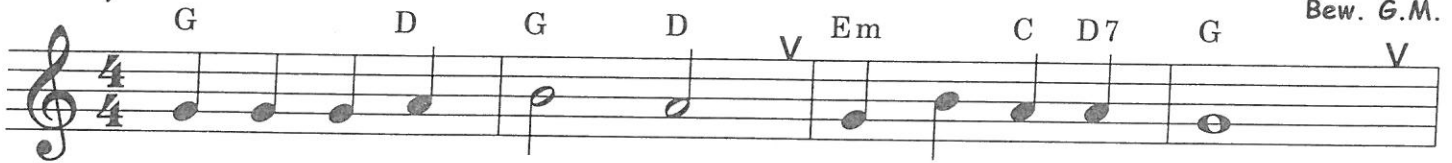


# Au Clair de la Lune



Trad.  
Bew. G.M.

Play



Intro

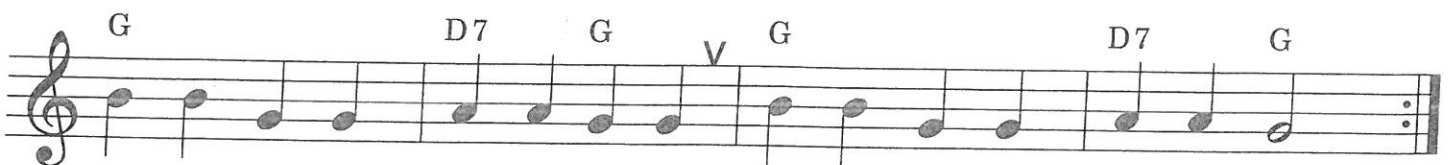
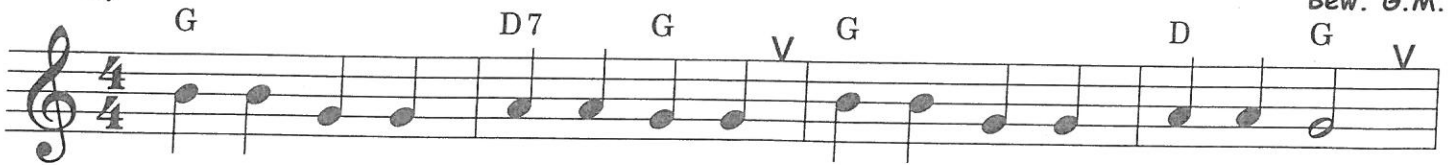


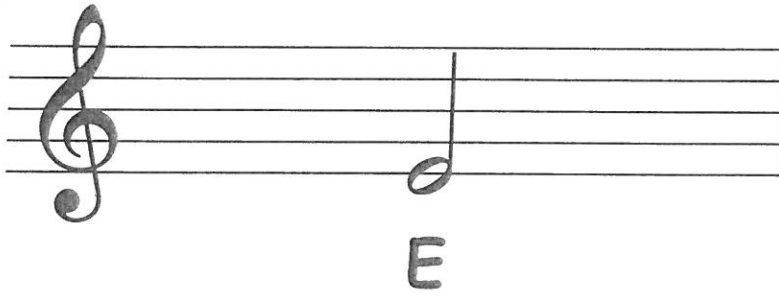
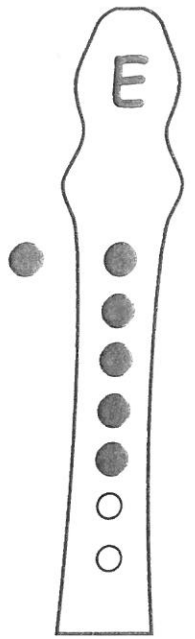
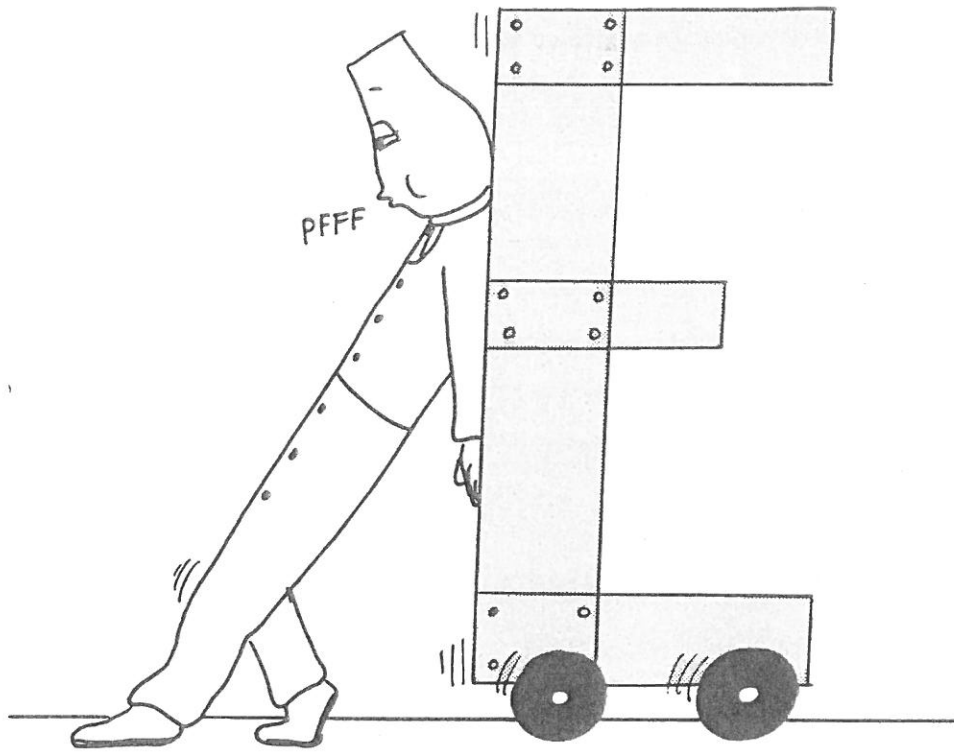
# Milksong



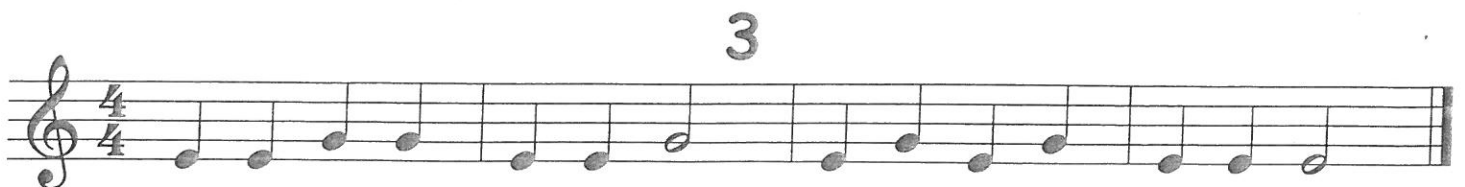
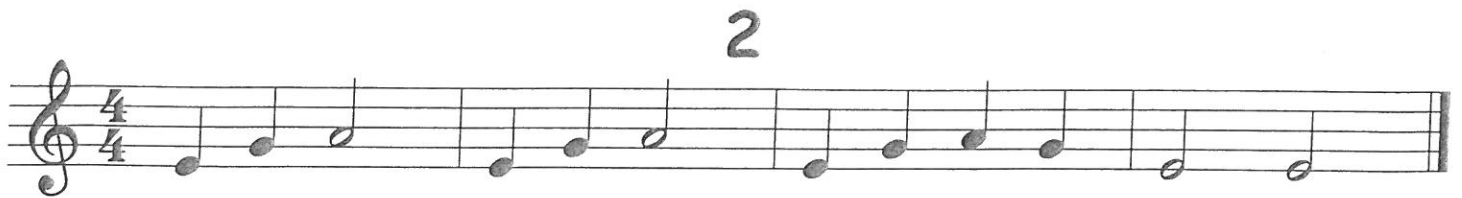
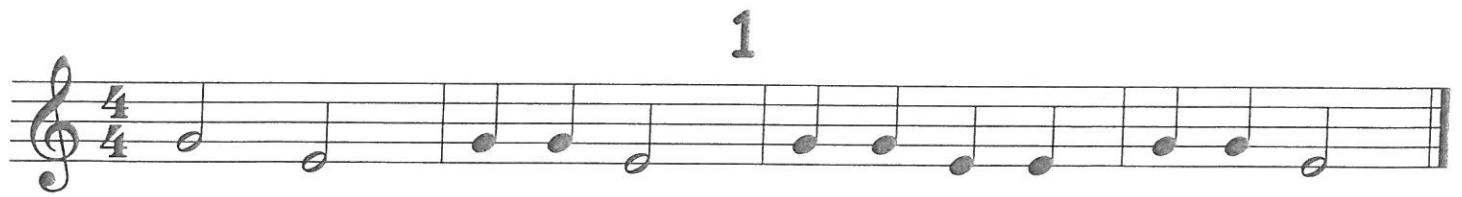
Trad.  
Bew. G.M.

Play



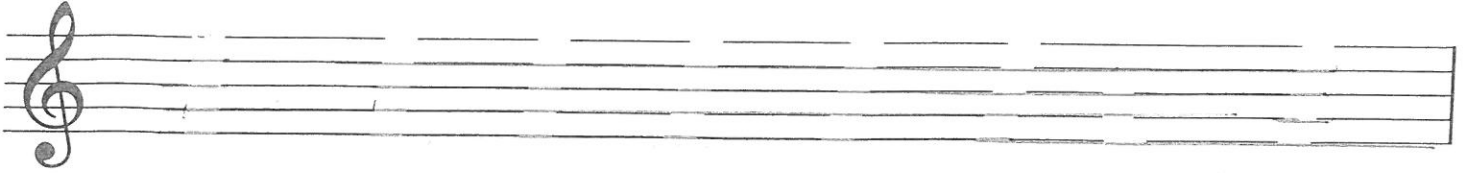


## Oefeningen

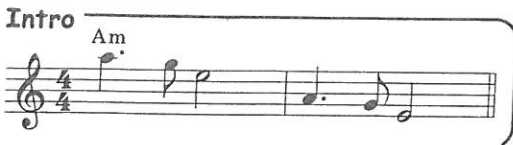
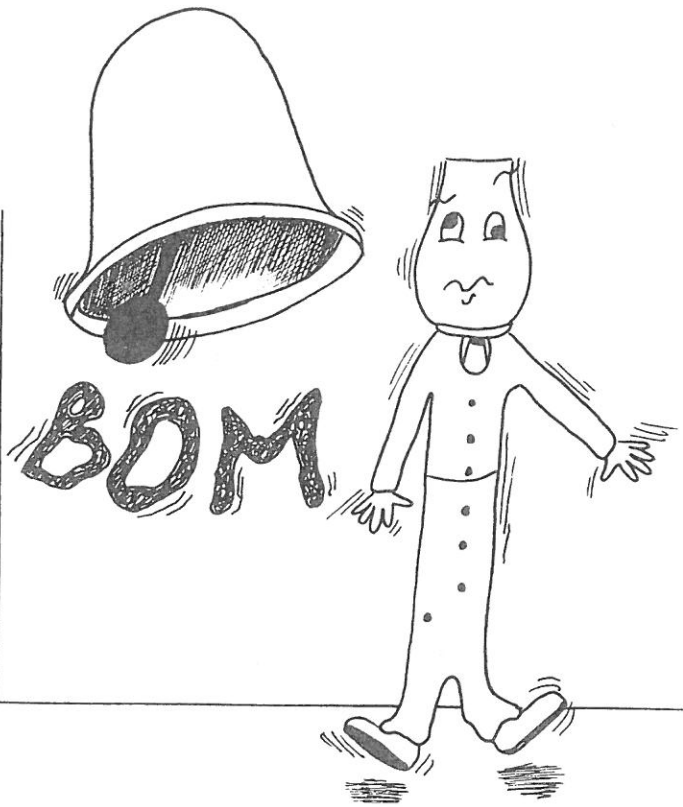


# Opdracht

Teken de noten boven de namen



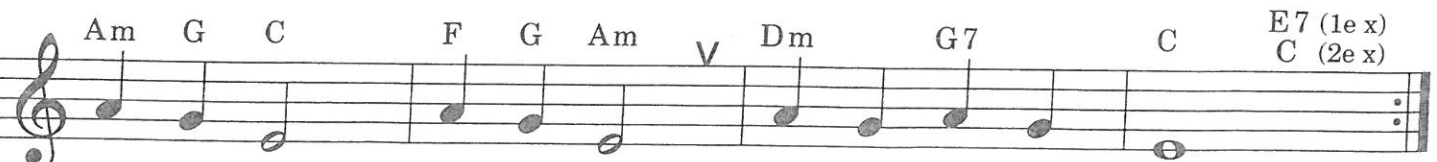
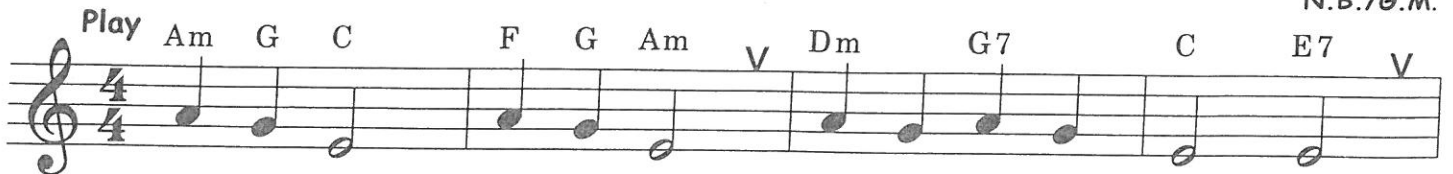
sol la sol mi la sol si mi

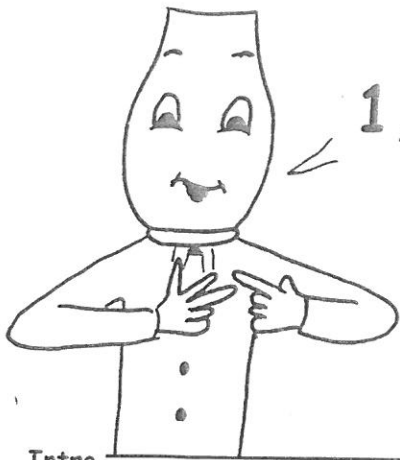


## Bim Bam Bom



N.B./G.M.





1, 2, 3

$\frac{3}{4}$

= 3 tellen in de maat spelen



= Noot van 3 tellen

Een noot van 3 tellen schrijf je als een noot van 2 tellen met een punt erachter.

Intro

# Petite Danse



N.B./G.M.

Play C

G Dm7 C (3x spelen)

2x herhalen en Fade Out

Fade Out: betekent dat het liedje niet op een bepaalde tel eindigt maar dat de muziek langzaam zachter wordt tot je niets meer hoort.

Intro

# Nina Nanna



N.B./G.M.

Play C

Dm G C