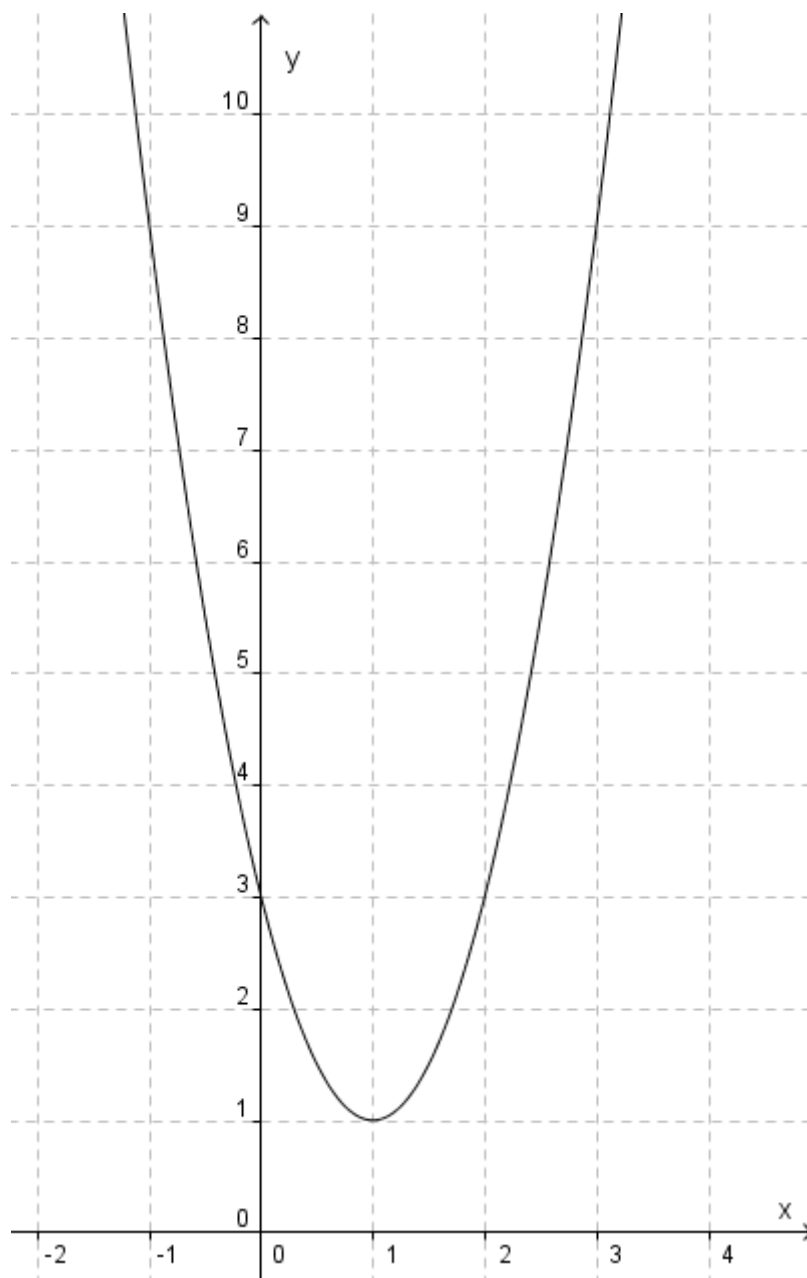
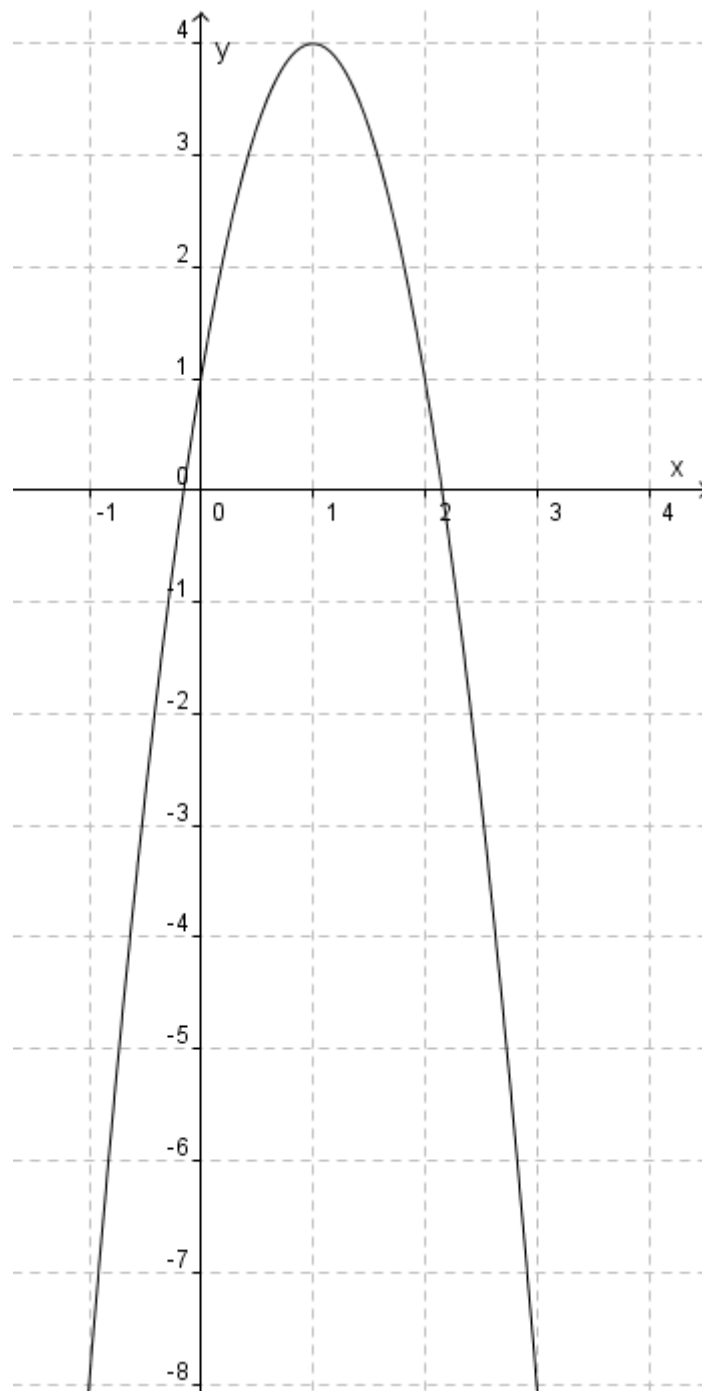


Bepaal telkens de vergelijking van de afgebeelde parabool.

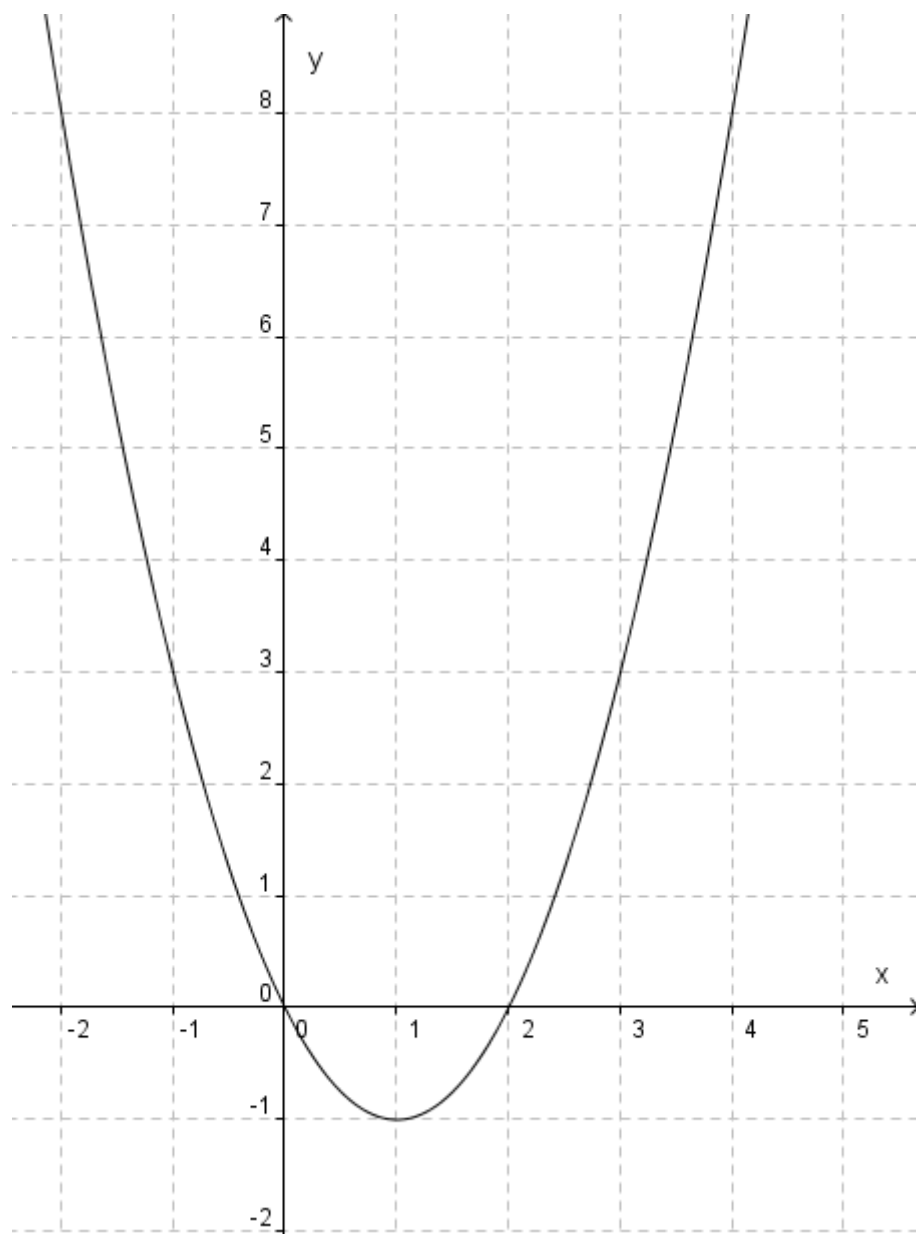
OPGAVE 1



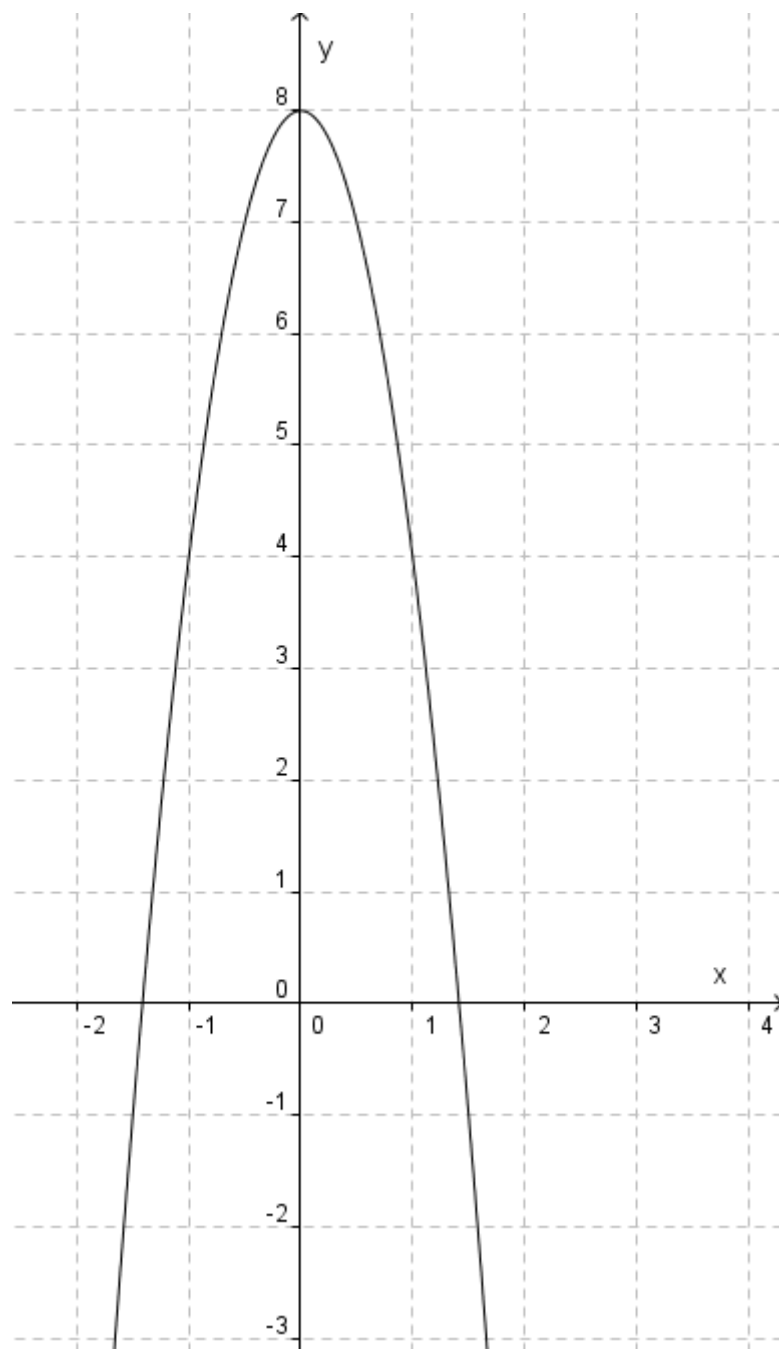
## OPGAVE 2



### OPGAVE 3



# OPGAVE 4



- OPLOSSINGEN
- 1)  $y = 2x^2 - 4x + 3$
  - 2)  $y = -3x^2 + 6x - 1$
  - 3)  $y = x^2 - 2x$
  - 4)  $y = -4x^2 + 8$